

MONTHLY MEMBERSHIP PROGRESS REPORT

District 24 L

Results as of: 3/31/2024

GMT:

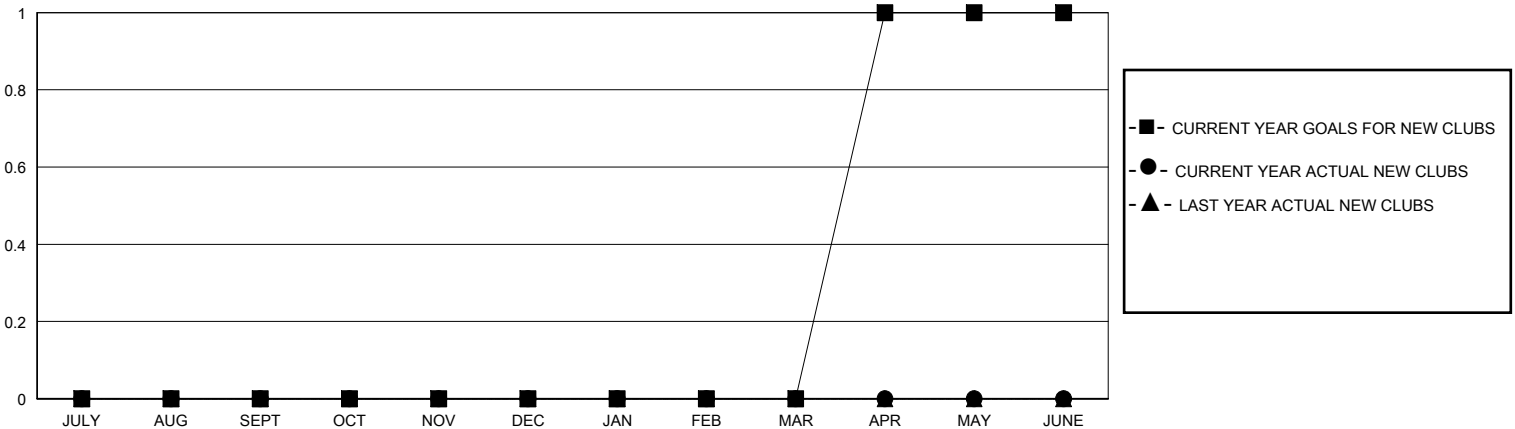
LOCATION VIRGINIA

GMT CA

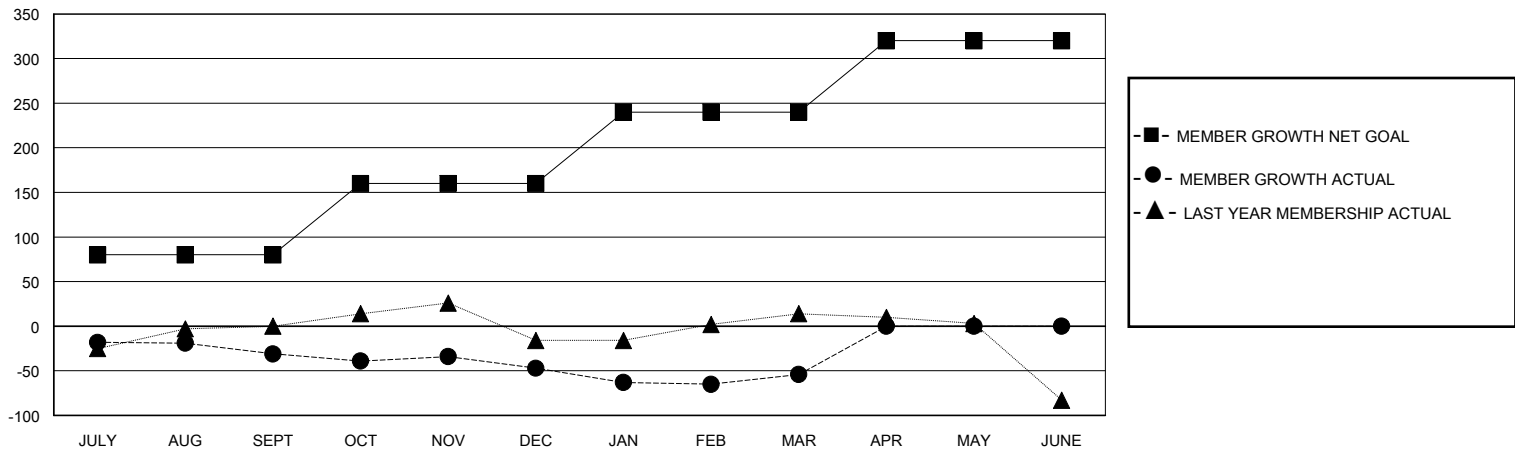
| Clubs | | | |
|-----------------------|---------------|-----------|---------------|
| RESULTS FOR 2023-2024 | | | |
| QUARTER | NEW CLUB GOAL | NEW CLUBS | DROPPED CLUBS |
| JULY/AUG/SEPT | 0 | 0 | 1 |
| OCT/NOV/DEC | 0 | 0 | 0 |
| JAN/FEB/MAR | 0 | 0 | 0 |
| APR/MAY/JUNE | 1 | 0 | 0 |

| Members | | | |
|-----------------------|------------------------|----------------------|--|
| RESULTS FOR 2023-2024 | | | |
| QUARTER | MEMBER GROWTH NET GOAL | MEMBER GROWTH ACTUAL | DROPPED MEMBERS ACTUAL (including transfers) |
| JULY/AUG/SEPT | 80 | 59 | 72 |
| OCT/NOV/DEC | 80 | 51 | 60 |
| JAN/FEB/MAR | 80 | 56 | 61 |
| APR/MAY/JUNE | 80 | 0 | 0 |

GOALS AND ACTUAL NEW CLUBS CUMULATIVE



GOALS AND ACTUAL MEMBERS CUMULATIVE



| | | |
|---|---|--|
| DROPPED CLUBS: 1 | 43 CLUBS OF 84 ADDED 1 OR MORE NEW MEMBERS | GENDER DISTRIBUTION MALE 1,384 (60.36%) FEMALE 909 (39.64%) |
| DROPPED MEMBERS DECEASED 28 CLUB CANCELLED 0 OTHER 165 TOTAL 193 | CLICK HERE FOR CUMULATIVE MEMBERSHIP DATA | TOTAL FAMILY UNIT MEMBERS 429 FAMILY MEMBERS PAYING HALF DUES 216 |